

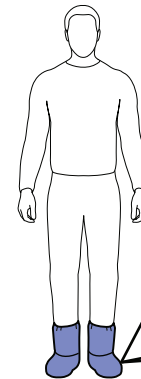
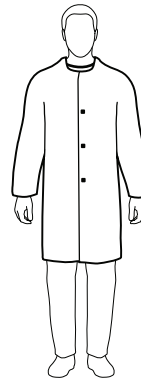
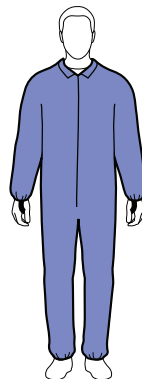
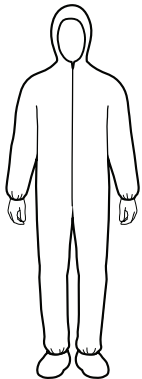
Q-Gard Comfortwear® & Traction Boot Cover

Serged Seams Dry Particulate Light Liquid Spray

Q-Gard **Comfortwear**® protective apparel is designed to be used in dry environments where the main goal is to stay clean, comfortable, and protect critical products. The unique SMMS construction is very strong while still maintaining a high level of breathability and particulate holdout. The **Real World Design**® puts more material in high stress areas such as the shoulders, crotch, and seat, reducing blowout. Increase productivity and reduce cost.



- Clean Manufactured
- Low Linting
- Meets NFPA 99 Antistatic
- ISO Class 5 Compatible



Traction non-slip sole



Coverall
0114_
zipper closure, hood and boot, elastic wrist ankles and back, white
Sizes: XL-4XL
Case Pack: 25

Coverall
QU0110_
zipper closure, elastic wrist ankles and back, white
Sizes: XL, 3X, 6X,
Case Pack: 25

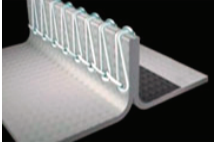
Coverall
0210_TL
thumb loops, zipper closure, elastic wrist ankles and back, white
Sizes: XL, 3X, 6X,
Case Pack: 25

Frock
QU0101_
snap closure, collar, elastic wrist, hemmed edge, long sleeve, white
Sizes: XL, 3X, 6X
Case Pack: 30

Boot Cover
0230_
dedicated sole, 18", elastic calf and ankle, color coded hem, blue
Sizes: S-XL
Case Pack: 100

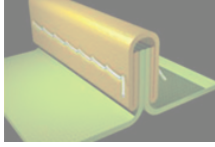
Physical Construction

Serged Seam



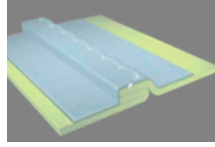
Serged seams join two pieces of material with a thread that interlocks. This is an economical stitching method for general applications where dry particulates are a concern. Not for use for chemical protection.

Bound Seam



Bound seams join two pieces of material with an overlay of similar material and is chain stitched through all of the layers for a clean finished edge. This provides increased holdouts of liquids and dry particulate.

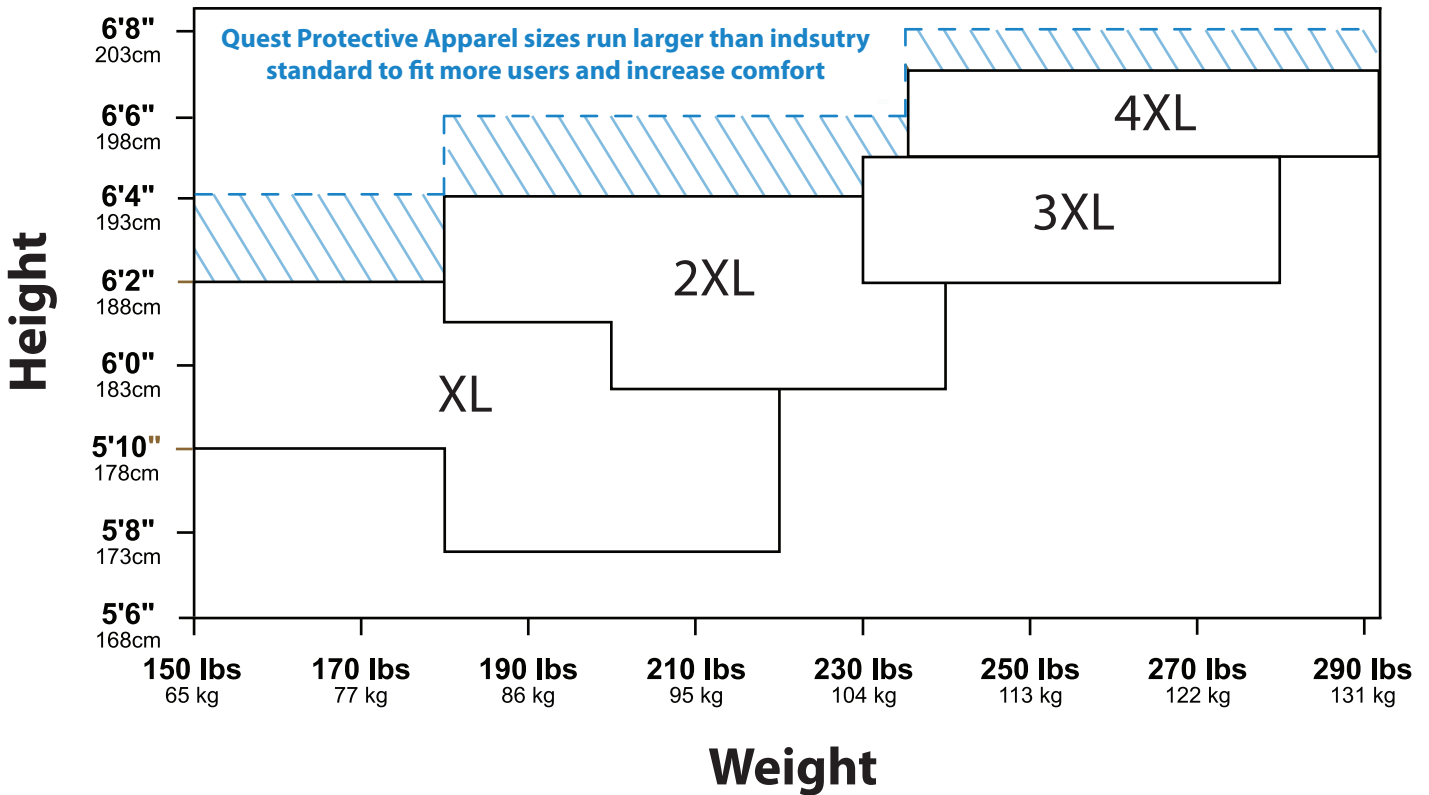
Taped Seam



Taped seams utilize a bound seam with the additional protection of a heat activated tape. This provides a liquid proof seam and is especially useful for chemical protective clothing.

Physical Property	Test Method	Units	Test Result
Basis Weight	ASTM D3778	gsm	50
Grab Tensile MD	ASTM D5034	lbs/in	32
Grab Tensile CD	ASTM D5034	lbs/in	23
Trapezoidal Tear MD	ASTM D5733	lbs/in	6.3
Trapezoidal Tear CD	ASTM D5733	lbs/in	10.7
Elongation MD	ASTM D5034	%	50
Elongation CD	ASTM D5035	%	50
Ball Burst	ASTM D1924	psi	33
Hydrostatic Head	AATCC 127	cm	50
Air Permeability	ASTM D 737	cfm	35
Static Decay - 50%RH	IST 40.2	sec	0.01

REAL WORLD SIZING CHART



Call Now: 1.800.878.4872

Or visit

www.QuestSafety.com